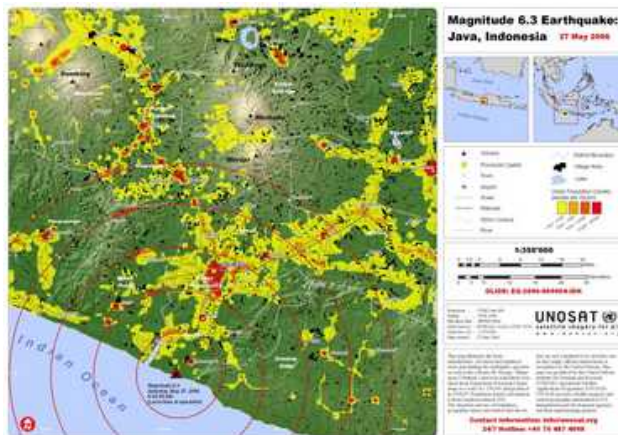


REVIVING THE REGION!

A RESPONSE FROM UNIVERSITAS GADJAH MADA TO THE YOGYAKARTA EARTHQUAKE



Courtesy of Reuters, 2006



Courtesy of UNOSAT, 2006

Prepared by

Universitas Gadjah Mada Team
UGM PEDULI BENCANA DIY DAN JATENG

Date of report: 1 June 2006

1. INTRODUCTION

The recent earthquake that hit Yogyakarta and the Central Java Province has had a death toll of more than 5,000 people, nearly 100,000 inhabitants of the two provinces have been injured or lost their homes. Indonesia's government declared a state of emergency and rescue workers raced against time on Monday in hopes of finding survivors under the debris of fallen homes. Reuter has reported that some 35,000 buildings around the city of Yogyakarta were reduced to rubble when the 6.3 magnitude earthquake struck at the crack of dawn on Saturday. It lasted 57 seconds, but its impact on the community will last much longer. The region feels all the more unstable because of the threat of a possible volcanic eruption from the Merapi volcano.

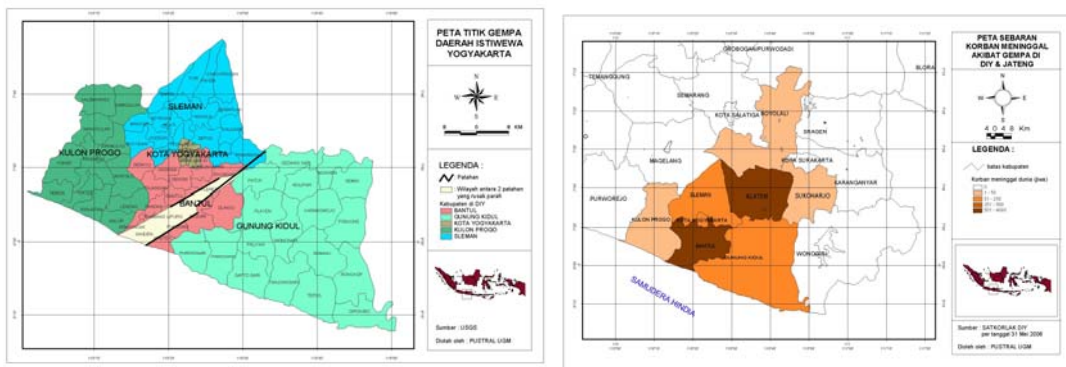


Figure 1. Maps of affected regions and casualties

2. THE NEED FOR A SYSTEM THAT WORKS

In responding to disasters, we must use a system that works. Slow initial response from the government has demonstrated that the disasters cripple not only government agencies, but also coordination efforts. We know from previous cases, especially Aceh, that a combination of short term and medium/long term measures should be elaborated to ensure a sustainable recovery pathway. Social and cultural issues should be addressed properly to exacerbate conflict between social groups during the first days after the earthquake.

Rescue, relief and reconstruction efforts should be centered on and around the needs of the disaster victims, as individuals and members of communities. The principles governing the intervention should be based upon the following:

- All intervention should safeguard, utilize and strengthen existing social institutions (values, norms, network, and mechanism);
- A disaster-sensitive governance at both policy-making and operational levels should be established involving relevant government and non-government institutions by setting-up and empowering a multi-stakeholder forum;
- A concerted effort for humanitarian and reconstruction activities should be undertaken;
- Immediate livelihood and income-generating activities should be a priority;
- Decision-making processes should be based on reliable and verified information.

3. OUR ROLE AND RESPONSE

As a partner in this endeavor, Universitas Gadjah Mada has positioned itself to assist local government agencies and the local community to regain their capacity in civil society. Its wealth of intellectual resources and experience has been instrumental in managing past disasters throughout the country. The deployment of students and staff to the disaster-affected regions as volunteers and community service workers is recognized as a direct contribution to the empowerment of the local community.



Figure 2. Immediate medical response

Gadjah University has responded swiftly to the earthquake. While its buildings were damaged and its staff not excluded from the grief and pain caused by the quake, the University has taken its responsibility seriously to support the local government and earthquake victims through a number of measures. Experience gained from involvement after Aceh's tsunami disaster will help UGM team to deal with the current catastrophe.

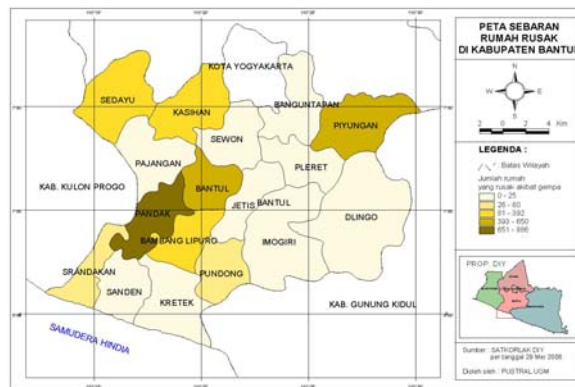


Figure 3. Map of damaged homes

SHORT/MEDIUM TERM ACTIVITIES

1. Immediate deployment of the medical team to the most needed locations
2. Disaster crises management team set up, headed by the Vice Rector for Cooperation
3. Coordination between the UGM team and the Provincial and District Disaster Coordination Unit (SATKORLAK and SATLAK) in field activities and advisory services for logistics and distribution and a grant accounting system
4. Support provided for the Coordinating Ministry of Economic Affairs in the preliminary physical and economic damage assessment
5. Coordination with other universities, organizations and individuals for unified humanitarian and reconstruction efforts

6. Establishment of an initial field operation center at Trimulyo Village, Jetis Municipality, Bantul District with plans for a possible extension to other locations once resources can be accumulated and capacity can be managed.

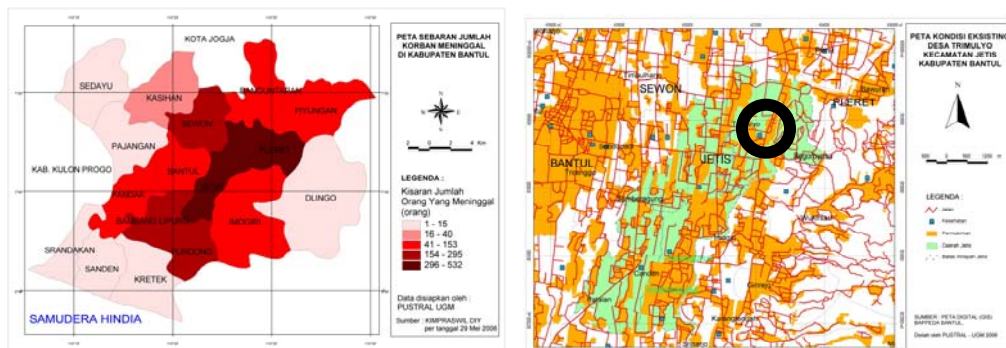


Figure 4. Map of deaths in Bantul District and the current location of the UGM field operation center

7. Establishment of a help-desk and information center
8. Deployment of UGM experts and students to the affected locations focusing on three areas of intervention
 - a. Supplies and daily needs—food supply for adults and infants and clothing and blankets for refugees
 - b. Medical and trauma recovery services—provision of health/medical supplies, trauma recovery programs and counseling
 - c. Infrastructure and shelter—focusing on identification and categorization of damaged public buildings and houses, provision of temporary shelters and retrofitting damaged buildings, and assistance in the construction of new buildings.

MEDIUM/LONG TERM ACTIVITIES

9. Livelihood and business start-up programs
10. Social safety networks
11. Regional re-development
12. Disaster preparedness using lessons learned from the current calamity.

4. HOW WE CAN MAKE YOUR CONTRIBUTION MEANINGFUL

Already some organizations and individuals have committed themselves to support the rescue, relieve and reconstruction effort through the Universitas Gadjah Mada Team. Companies through their corporate social responsibility programs and individuals have donated funds and NGOs and professional associations have provided their expertise. We are committed to supporting government and community efforts to ensure that victims can be assisted properly, can stand on their own feet and regain their dignity as individuals and members of the community. We make sure that all donations and financial support are managed in a transparent and accountable manner.

In order to find out more about Universitas Gadjah Mada's effort in reviving the nation, please contact:

Prof. Dr. Agus Dwiyanto
Coordinator – UGM PEDULI BENCANA DIY DAN JATENG
Vice Rector for Cooperation and Business Development
Universitas Gadjah Mada

Mobile: +62 811256754

Donations could be sent to:

Bank MANDIRI, UGM Bulaksumur Yogyakarta Branch
Account Name : UGM PEDULI BENCANA DIY
Account Number : 137-0000006995
Swift Code : BEIIDJA

Bank BNI, UGM Bulaksumur Yogyakarta Branch
Account Name : Prof. Dr. Agus Dwiyanto qq UGM Peduli Bencana DIY
Account Number : 102830378
Swift Code : BNINIDJA

Help desk and information center:

POSKO UGM PEDULI BENCANA
Bulaksumur A-11
Yogyakarta 55281, INDONESIA
Tel. +62 274 588688
E-mail address: a11@ugm.ac.id
head-oia@ugm.ac.id (for international correspondence)

Web: www.helpiogja.net

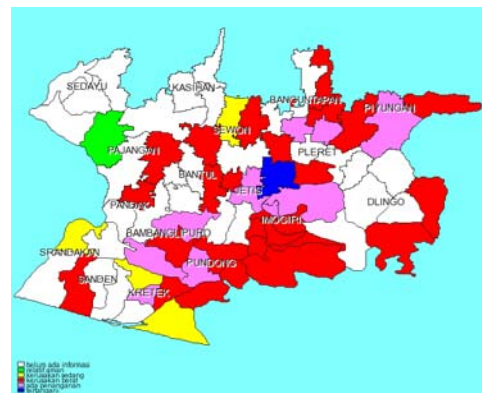
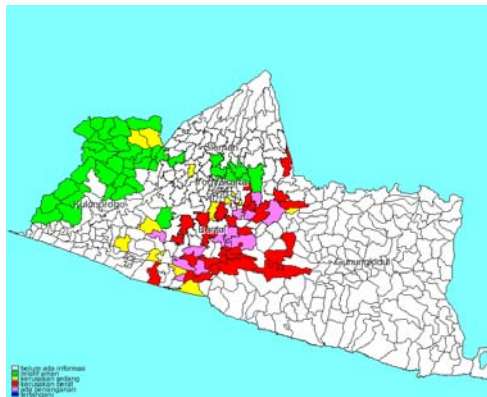
ACTION PLAN AND COMPLETED STEPS

The following is a description of the activities already undertaken. Progress reports will be provided in the future.

1. Help desk and information center

Coordinator: Mr. Gatot Murdjito (+62 811266059),
Mr. Bambang Prastowo (+62 8157950791)

Located at the university campus, the 24-hour center maintains the whole internal organization, deployment and financial affairs of the operation. It serves as a collection and distribution point as well as a meeting venue for the disaster management team. Equipped with a GIS system, the center is able to bring us the latest information about the status of the crisis. A website for the center (helpjogja.net) is an alternative source to broadcast information about the earthquake and publish reports from the field. Another office at the University main building serves as the place for program development and fund raising activity.



2. Advisory and technical support to the government

Coordinator: Mr. Darmanto (+62 811286939)—SATKORLAK
Mr. Arif Wismadi (+62 816682758)—Coord. Ministry for Economic Affairs

- a. The UGM Team has assisted SATKORLAK in infrastructure and shelter provision.
- b. The UGM Team has started assisting the team from the Coordinating Ministry of Economic Affairs to estimate the damage of the quake to the physical infrastructure and economy. The estimate will be conducted using an interpretation of aerial photography/videography, secondary data collected by various institutions and field surveys for spot-checking and verification. The information will be utilized to assist the central government in developing assistance for the provinces of Yogyakarta and Central Java.

3. Logistic Supports

Coordinator: Mr. Eddy OS Hiariej ((+62 8157934004)

Currently located at Trimulyo Village, the logistics team has focused on the needs of approximately 3,000 inhabitants in 7 distribution points. Utilizing 175 students as volunteers and community workers, the team has managed to supply meals, clothing, blankets and power generators as well as temporary shelters. The team has encouraged the local community to provide their own daily supplies and meals instead of receiving precooked-meals. Expansion of services to another two villages (Piyungan and Gantiwarno) is currently underway.

4. Medical and trauma recovery services

Coordinator: Prof. Dr. Ali Ghufroon (+62 811255702) – field coordinator
Prof. Dr. Hardyanto (+62 816682999)

The medical team started their work immediately after the disaster. A combination of three approaches to the victims was introduced, namely (1) in-camp medication, (2) mobile health support, and (3) upon-request services. The medical team also prepares patients for hospitalization. The GMC (Gajah Mada Medical Center) has supported the medical team by providing medicine and medical supplies. The team has been assisted by various other medical teams such as the team from AKPER Medical College, Bandung. Between 28/5/2006 and 1/06/2006, already 862 patients were served and 11 patients were evacuated to Sardjito General Hospital.

5. Psycho-trauma services

Coordinator: Dra. Supra Wimbarti, M.Sc., Ph.D.
Dra. Noor Sitirahmani, M.Si.

Thousands of survivors, especially children, have physically and mentally suffered the damage of the earthquake. Led by the Faculty of Psychology, the Psycho-trauma services help those traumatic victims regaining their courage to get back to normal life.

6. Infrastructure and shelter

Coordinator: Dr. Nizam (+62 81578700151)

Led by the Faculty of Engineering staff, 400+ students of the rapid assessment team investigate and provide up-to-date information on the infrastructure and housing damage. The team identifies damaged buildings by putting them into three categories: badly damaged (red tape), moderately damaged (yellow tape) and slightly damaged (green tape). This information will be useful in estimating the cost of the damage during physical reconstruction. Already the team has developed a crash course for other organizations such as the Indonesian Engineers Association (PII) to replicate the method to other locations. Requests have also been made by Government Agencies such as the Department of National Education to assess damaged schools. When the team receives adequate resources, the whole exercise can be undertaken within 1 – 1.5 weeks.

Another team has assessed the effectiveness the logistics and distribution system. This team looks at the traffic and transport management system to ensure the smooth delivery of supplies and services to the affected region.

7. Support for UGM students and employees

Coordinator: Dr. Bambang Purwono, M.Sc.
Danar Rahmawati, S.H., LL.M.

More than a thousand university employees and faculty members lost their houses due to the earthquake. They have to live in tents and temporary shelters. University management has decided to reallocate a significant portion of its development funds to support employees in finding temporary housing. But, since the number of employees affected by the earthquake is so large, the fund is far from adequate. In addition, thousands of students' parents have suffered from the earthquake and need help. The earthquake has not only destroyed their houses but also killed their family members. Thousands of orphaned students need support to complete their study at UGM. The university has raised funds from domestic and overseas sources to provide scholarships to students who have lost their parents and housing.

8. Scholarship for UGM students

Coordinator: Prof. Ir. Sudjarwadi, M.Eng., Ph.D.
Dr. Chairil Anwar

Our students and their families have also suffered the casualties of the earthquake. The casualties have prevented them from following the classes regularly. Furthermore, some of them need to postpone or even forced to call of their study due to financial problem. UGM plans to grant them scholarships in order to help them continue their study.

9. Reviving for small-medium enterprises

Coordinator: Dr. Mudrajad Kuncoro

The earthquake has destroyed small and medium enterprises in Bantul. Bantul is well-known as main supplier of handicrafts, ceramics, and leather exported through Bali. The earthquake has destroyed production houses of various SMEs in Bantul. UGM students have volunteered to conduct a quick survey to identify problems facing small-medium enterprises to reactivate their production capacity. A specifically-designed team of faculty members is working very hard to empower SMEs in Bantul and Klaten and advocate for public policies to support SMEs as they recover their production capacity.

10. Contingency-sensitive governance

Coordinator: Prof. Dr. Nasikun
Dr. Agus Pramusinto

It is very clear that the government of Indonesia has failed to provide adequate responses to the devastating earthquake. Both local and national government

has failed to demonstrate their leadership in helping the victims, by deploying supplies, medical services, and temporary shelters in an effective way. Learning from the case of Aceh, UGM has created a small team to design a double-track governance system which provides the government discretionary power to act in creative and responsive ways to respond as any contingency arises.

11. Earthquake analysis team

Coordinator: Dr. Dwikorita Karnawati (+62 811286756)
Dr. Subagyo S. (+62 8164223272)
Dr. Sudibyakto (+62 811267726)

This small-but-effective team of geologists has provided an analysis of the earthquake in Yogyakarta. In partnership with various experts at home and abroad, this team has produced an initial assessment of the disaster and constantly issues up-to-the-minute information on the movement of the earth.

12. Agricultural sustainability

Coordinator: Prof. Dr. Irham (+62 8156890964)

The current harvest is seriously threatened by the lack of agricultural labor. The team has assembled students, mainly from the Faculty of Agriculture to substitute for agriculture workers to harvest the produce. In addition, the team has conducted an assessment of the impacts of the earthquake on agricultural infrastructure.

HOW MUCH IT WILL COST AND WHAT RESOURCES ARE REQUIRED

It is not easy to estimate the costs of these activities. Most of the efforts described above are undertaken on a voluntary basis. It is difficult to value the input of experts and volunteers involved in humanitarian, rescue, relief and reconstruction activities. Housing and accommodation of the voluntary workers coming from our partner organizations are provided by the University. Money spent mostly supports direct operating costs, i.e. meals, fuel, etc.

WHAT WE HAVE RECEIVED—but MORE IS NEEDED

Donations received (as per 6 June 2006)

Total **Rp. 874.000.000,50**

In-kind support channeled through the help desk and information center (as per 1 June 2006)

No	Items	Incoming goods					Outgoing goods				
		28-May	29-May	30-May	31-May	1-Jun	28-May	29-May	30-May	31-May	1-Jun
1	Food	90 Boxes, 40 kg	1500 boxes	4,257 boxes, 27 kg	881 boxes	300 boxes, 95 cartons	0	4,500 boxes, 86 kg	4,198 boxes, 12 cartons, 27 kg	341 cartons	1,110 cartons, 307 boxes
2	Infant meal	0	0	28 boxes	118 boxes	41 cartons, 35 boxes	0		4 boxes	1 cartons	15 cartons, 374 boxes
3	Clothing and blankets	2 pieces	0	161 pieces, 6 rolls	20,370 pieces	32 cartons, 1,698 pieces	0	5 pieces	364 pieces	465 pieces	22 cartons, 1,373 pieces
4	Medical supplies	0	80 boxes				0				
5	Tents (large and small)	0			50 units		0				
6	Equipment	22 units	0	19 units, 1 roll	6 units		0	55 units	49 units	22 units	

Universitas Gadjah Mada is grateful to the following organizations that have supported UGM PEDULI BENCANA DIY DAN JATENG (data as per 1 June 2006):

1. Bakrie Group
2. Fujien Community in Jakarta
3. Tanoto Foundation
4. Indogrosir
5. West Java Province Department of Health
6. BNI 46

ANTI-CORRUPTION MEASURES

UGM is a legal entity and is committed to practice good university governance. Its internal audit team will ensure that all funds and cash flow are monitored and reported to every donor. The least-cost option will be sought to ensure that even in a time of disaster, the expenditure is monitored tightly. Lists of unit costs will be issued regularly and endorsed by the internal audit team as the field information becomes available. Requests for expenses are controlled by the Coordinator and verified by the Director of Finance at UGM.

In-kind support will be scrutinized regularly, not only in terms of the quantity received and distributed, but also to ensure that health and safety is maintained.